

Digital N

Industrial Endoscope



Introduction:

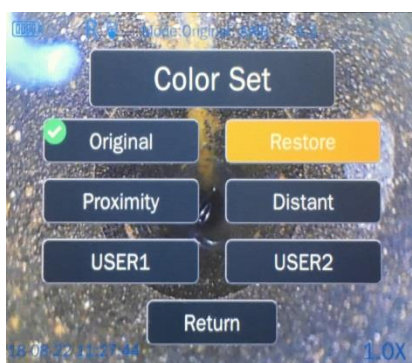
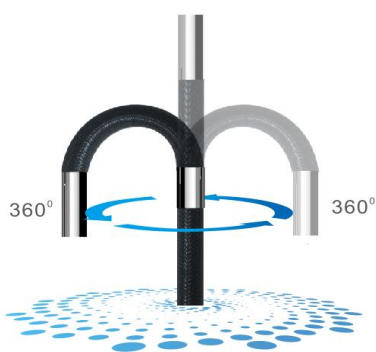
Digital N is based on normal N series, adopted latest digital platform and high brightness sensitive modules, which make color settings, white balance and picture annotations available.



1、 Intelligent image processing system to show very clean image.

2、 Color settings to meet different applications.

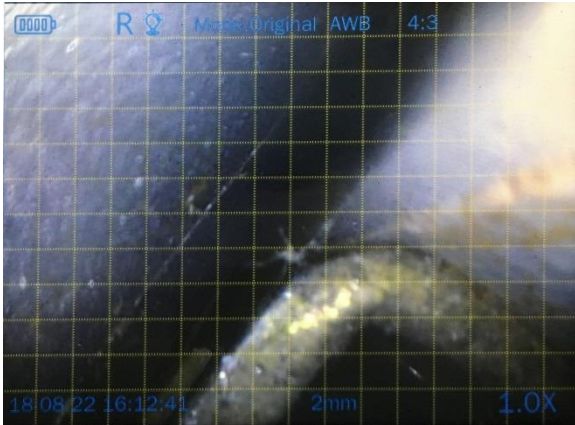
3、 Step by step rocker controlling system makes precise camera location.



4、 Flexible Control electromagnetic rocker control structure, probe bends

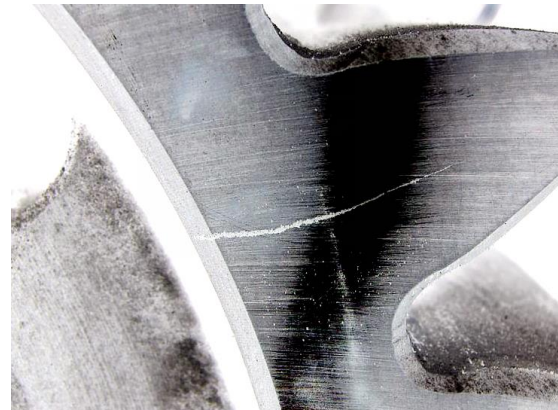
5、 Customized settings, more user friendly.

6、 Interchangeable lens to meet various applications.



7、 1mm、 2mm、 4mm three types rules to do basic measurement.

8、 Crack detection (the left is a conventional effect, the right is the reverse color display effect).



Application field:

1. Aviation & Space Industry

It can be used to inspect regularly turbine, blades, engine, surface of welding and conductor pipes, combustion chamber in plane, and in development and manufacture of rocket.

2. Electrical Production and Construction Unit

It can be used to detect and monitor defects of important apparatus such as turbine, pipes.

3. Petro - Chemical and Pressure Container Industries

It can be used to inspect reserve tanks, heat exchangers and tank trucks in oil refinery, pipes in chemical plant and containers, steel cylinders and pipes in special inspection unit and pressure container plant.

4. Railway, Ship, Construction Engineering and Research Unit

Railway/Ship: It can be used to inspect electrical locomotive, air - conditioner, turbine, heater,

gas - engine and flames of boiler.

Construction Engineering: It can be used to inspect erosion and fouling of pipes, rust of concrete iron, break of support shaft and bridge connection part; to observe caves inside tunnel and construction model; to diagnose erosion and blockage of running water pipe.

Research Unit: It can be used in observation, research, trial, archaeological work and etc.



Specifications:

	Category	Description
	Dimension/Weight	156*356*80mm/1.5KG
	Display screen	5" IPS LCD (640 x 480)
	Control lever/oriented control	Electric rocker with lens able to rotate in 360-degree, software navigation key/step-drive, fast and slow regulation, automatic set
	Functions	Photography, video, brightness control, locking and fine tuning
	Storage	32G high speed Micro SD card
	I/O port	Debug Port
	Battery/Standby time	Li on Battery 18650 x2 / 2.5 hours N-D
	Brightness control	5 degrees each for high and low brightness adjustment, 10 degrees in total
	Software	Operation system
File management		File & Folder creation, naming, deleting Storing to SD card or USB ThumbDrive
Image control		Zoom in/out(1.0X-1.5X,5 steps), playback, picture freeze-frame, image reversal, mirror image
Image format/Video format		JPEG,JPG/AVI(record date and time)
Language		English/Chinese/Korean/German/Russian/Japanese

	Color settings	6 modes for different applications
	White balance	Automatic/manual white balance
	Exposure mode	Automatic/manual/shutter/aperture exposure
	Reference measure/upgrade	Grid reference/upgrade by Micro SD card service pack
Operating environment	Monitor working temperature	-10~50°
	video probe working temperature	-20~70°
	Relative humidity	Highest 90%,no condensation
	Waterproof	Monitor IP54/video probe IP67

Models for N-series

Model	Part No	Description											
		Diameter [mm]	Insertion Tube Length [m]	System Platform	Camera				Optic		Light		Probe Bending
					Location	Head Type	CMOS Sensor	Resolution	Depth of Field	Angle of View	Type	[Lux]	
N410FM	12141010	3.9	1	Non-digital	Front	PG	A	720*576	7-80mm	110°	LED	6000	170±10°
	12241010		1	Digital									170±10°
N415FM	12141015		1.5	Non-digital									170±10°
	12241015		1.5	Digital									170±10°
N420FM	12141020		2	Non-digital									150±10°
	12241020		2	Digital									150±10°
N430FM	12141030		3	Non-digital									120±10°
	12241030		3	Digital									120±10°
N450FM	12141050		5	Non-digital									100±10°
	12241050		5	Digital									100±10°
Model	Part No	Description											
		Diameter [mm]	Insertion Tube Length [m]	System Platform	Camera				Optic		Light		Probe Bending
					Location	Head Type	CMOS Sensor	Resolution	Depth of Field	Angle of View	Type	[Lux]	
N610FM	12161010	6	1	Non-digital	Front	QB	A	720*576	7-80mm	80°	LED	20,000	170±10°
	12261010		1	Digital									170±10°
N615FM	12161015		1.5	Non-digital									170±10°
	12261015		1.5	Digital									170±10°
N620FM	12161020		2	Non-digital									150±10°
	12261020		2	Digital									150±10°
N630FM	12161030		3	Non-digital									120±10°
	12261030		3	Digital									130±10°
N650FM	12161050		5	Non-digital									110±10°
	12261050		5	Digital									120±10°
N680FM	12161080	8	Non-digital	100±10°									
	12261080	8	Digital	100±10°									
Model	Part No	Description											
		Diameter [mm]	Insertion Tube Length [m]	System Platform	Camera				Optic		Light		Probe Bending
					Location	Head Type	CMOS Sensor	Resolution	Depth of Field	Angle of View	Type	[Lux]	
N610DM	12263010	6	1	Digital	Front&Side	PD	A/A	720*576/720*576	F7-80mm/S3-30mm	F100°/S90°	Front&Side LED	F15,000/S10,000	170±10°
N615DM	1263015		1.5										170±10°
N620DM	12263020		2										150±10°
N630DM	12263030		3										130±10°
N650DM	12263050		5										120±10°
N680DM	12263080		8										100±10°